

Research to meet the needs and aspirations of society

We are fully committed to building on the University's strong track record in all areas of research to expand and enhance our contribution to knowledge generation and the application of that knowledge to solving problems with our external stakeholders.

How to find us

The University of Glamorgan's Treforest and Glyntaff Campuses are situated near Pontypridd, approximately 12 miles from Cardiff, the capital city of Wales.

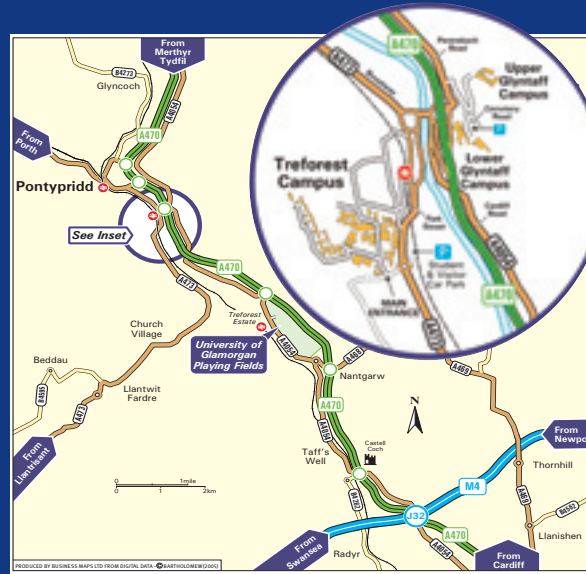
Treforest Campus
Pontypridd, CF37 1DL

Glyntaff Campus
Glyntaff, CF37 4BD

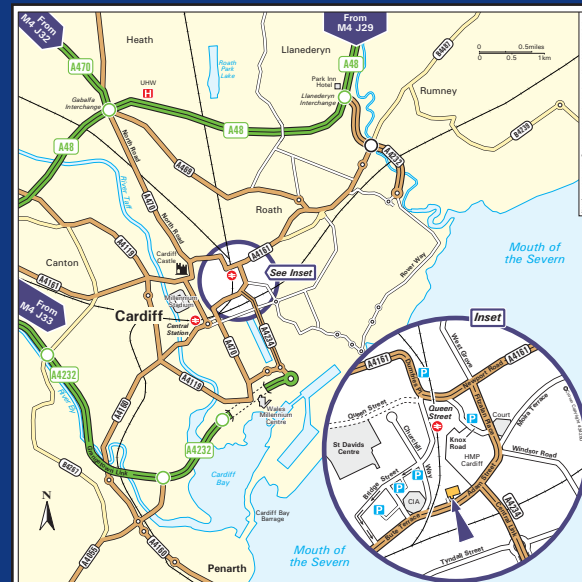
ATRIUM Campus
Cardiff, CF24 2FN

For detailed instructions visit:
www.glam.ac.uk/visiting

Treforest and Glyntaff Campuses



ATRIUM Campus, Cardiff



University of Glamorgan
Prifysgol Morgannwg



Inaugural Professorial
Lecture Series
2010-11

Open to all

www.glam.ac.uk/research

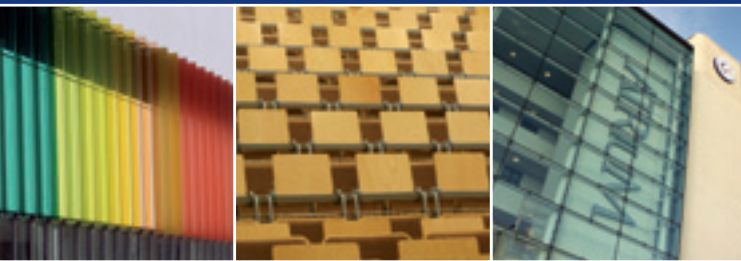
Welcome

Welcome to the University of Glamorgan's Inaugural Professorial Lecture Series for 2010-11, which celebrates the academic achievements of our Professoriate. This is a defining moment in an academic's career and is the first lecture they give following the award of their professorship.

This year's lectures are diverse and range from slavery and the abolitionist culture of early Victorian Britain to sustainable methods of repairing and strengthening concrete structures; they reflect the variety of topics and the breadth and depth of the high quality research we undertake.

- Lectures are held on Tuesday evening (unless otherwise stated) in the Glamorgan Conference Centre, Treforest Campus, Glyntaff Campus or ATRium Campus, and start at 6.00pm.
- Refreshments are available from 5.30pm and light refreshments will also be served following the lecture.
- All lectures are free and open to members of the public.

To book your place call **01443 483 345** or e-mail **researchoffice@glam.ac.uk**



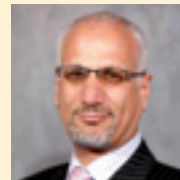
Treforest Campus Glamorgan Conference Centre



Tuesday 12th October 2010
Chris Evans, Professor of History
Brazilian Gold, Cuban Copper and the Final Frontier of British Anti-Slavery



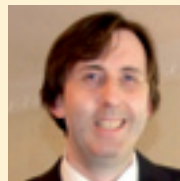
Tuesday 9th November 2010
Alan Hawley, Professor of Disaster Studies
A Journey Through War and Genocide: A Personal Odyssey



Tuesday 11th January 2011
Abid Abu Tair, Professor of Civil and Mechanical Engineering
Deterioration, Modelling and Repair of Concrete Bridges



Tuesday 15th March 2011
Douglas Tudhope, Professor of Computing and Mathematical Science
Knowledge Organisation Systems and Information Discovery



Tuesday 10th May 2011
David Pickernell, Professor of Economic Development Policy
From Despair to Where? The Many Faces of Economic Development Policy

Glyntaff Campus Lecture Theatre Aneurin Bevan Building



Tuesday 14th December 2010
Tony Davies, Professor of Analytical Science
Analytical Science...Your Life in Our Hands!



Tuesday 12th April 2011
Paul Rogers, Professor of Forensic Nursing
Mental Health Nursing Research: What are the Risks of That Happening?



Tuesday 14th June 2011
Anthony Beddow, Visiting Professor at the Faculty of Health, Sport and Science
The Miner's Canary, May it Fly

ATRium Campus Theatre (CB4)



Tuesday 8th February 2011
Peter Robertson, Dean, Cardiff School of Creative & Cultural Industries
Creative Industries – An Economic Miracle or Myth?